



www.htube.com

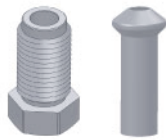
TUBOERREDOZIOES



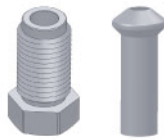
Htube

ACESSÓRIOS PARA TUBO TRAVÃO DE AÇO

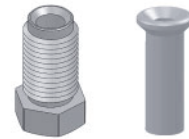
MACHO ROLANTE METRICO



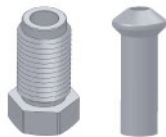
19.9710300
MACHO M10x1 T-4.75



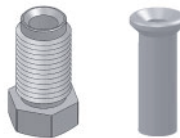
19.9990224
MACHO M10x1 T-4.75



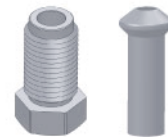
19.9720300
MACHO M10x1 T-4.75



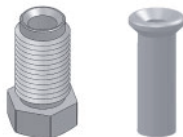
19.9990204
MACHO M10x1.25 T-4.75



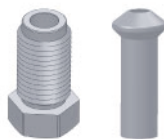
19.9990203
MACHO M10x1.25 T-4.75



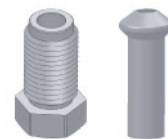
19.9710403
MACHO M12x1 T-4.75



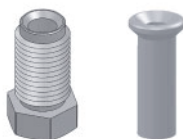
19.9720403
MACHO M12x1 T-4.75



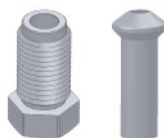
19.4533003
MACHO M12x1,25 T-4.75



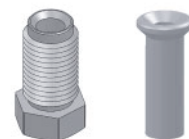
19.9710400
MACHO M12x1 T-6



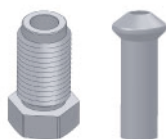
19.9720400
MACHO M12x1 T-6



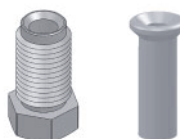
19.9710651
MACHO M14x1 T-8



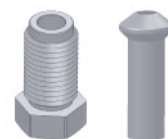
19.9720651
MACHO M14x1 T-8



19.9710600
MACHO M14x1,5 T-8

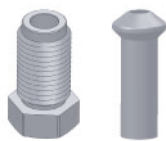


19.9720600
MACHO M14x1,5 T-8

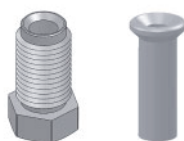


19.9710800
MACHO M16x1,5 T-10

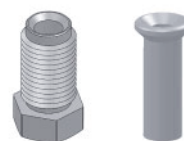
MACHO ROLANTE UNF



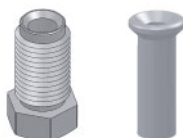
19.9730300
MACHO 3/8-24 UNF T-4.75



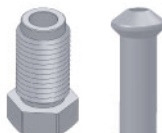
19.9740300
MACHO 3/8-24 UNF T-4.75



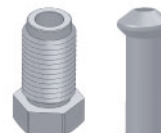
19.9990215
MACHO 1/2-20 UNF T-4.75



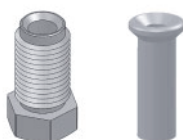
19.9990216
MACHO 7/16-20 UNF T-4.75



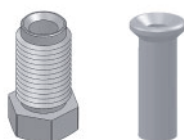
19.9990218
MACHO 7/16 UNF T-4.75



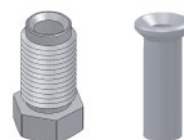
19.9990200
MACHO 1/2-20 UNF T-6



19.9990210
MACHO 7/16-24 UNF T-6

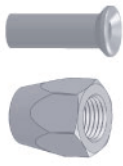


19.9990217
MACHO 7/16-20 UNF T-6

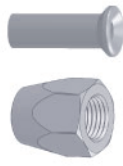


19.9741008
MACHO 5/8-18 UNF T-10

FEMEA ROLANTE METRICA

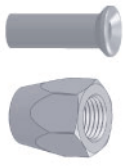


19.9330300
FEMEA M10x1 T-4.75

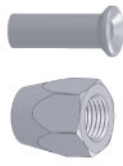


19.9330809
FEMEA M16x1,5 T-9

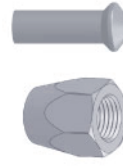
FEMEA ROLANTE UNF



19.9990425
FEMEA 7/16-20 UNF T-6



19.9990404
FEMEA 3/8-24 UNF T-4.75



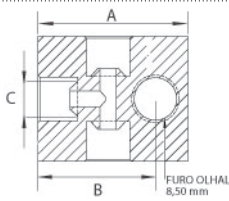
19.9990443
FEMEA 3/8-24 UNF T-4.75

MAQUINA P/TUBO TRAVAO METALICO

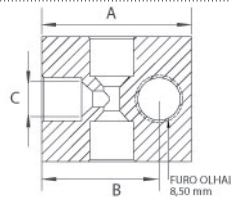


HT-104
MAQUINA P/TUBO TRAVAO METALICO
4.75/6mm

DERIVADOR T



29.T
DERIVADOR T CONE MACHO



29.T
DERIVADOR T CONE FEMEA

TUBOS DE TRAVÃO



TB
TUBO TRAVAO SAE-J-1401

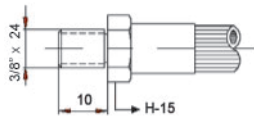


TB.412
TUBO TRAVÃO AR SAE J1402

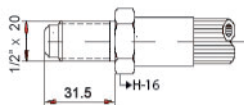


TB
TUBO TRAVÃO AÇO

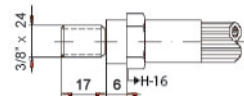
PONTEIRA MACHO SAE



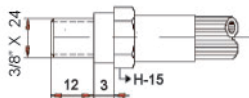
29.107
MACHO PLANO 3/8-24



29.452
MACHO 1/2-20



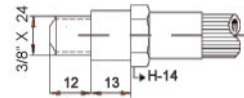
29.101
MACHO 3/8-24



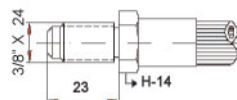
29.139
MACHO 3/8-24



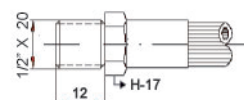
29.157
MACHO 3/8-24



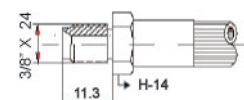
29.138
MACHO 3/8-24



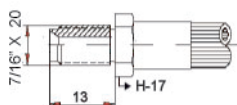
29.130
MACHO 3/8-24



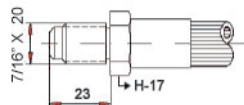
29.135
MACHO PLANO 1/2-20



29.129
MACHO 3/8-24



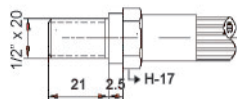
29.134
MACHO 7/16-20



29.149
MACHO 7/16-20



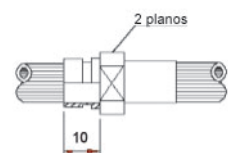
29.125
MACHO 3/8-24



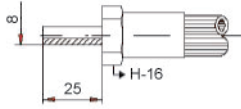
29.506
MACHO 1/2



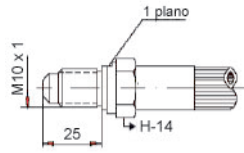
29.510
MACHO 7/16



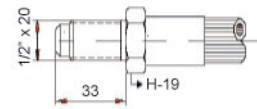
29.508
PONT. TRAVÃO ABRAÇADEIRA



29.110
TUBULAR 8mm

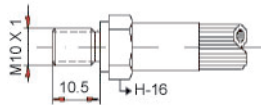


29.120
MACHO 10x1



29.601
PONT. TRAVÃO MACHO 1/2 T-3/16

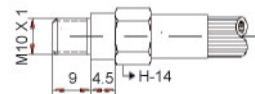
PONTEIRA MACHO MÉTRICA



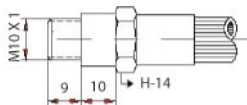
29.145
MACHO PLANO 10x1



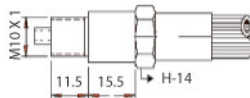
29.193
MACHO 10x1



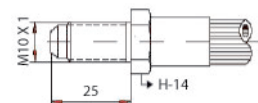
29.185
MACHO 10x1



29.137
MACHO 10x1



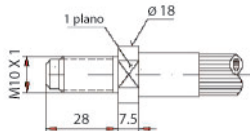
29.512
MACHO 10x1



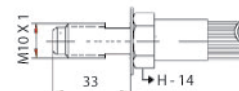
29.170
MACHO 10x1 L-25



29.168
MACHO 10x1



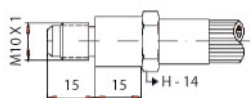
29.161
MACHO 10x1



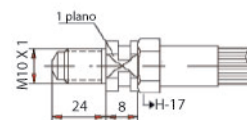
29.205
MACHO M10x1 LONGO



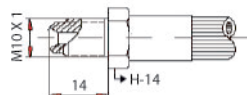
29.206
M10x1 CONE-SAE



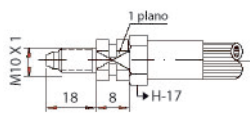
29.152
MACHO 10x1



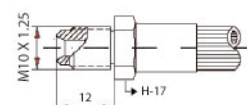
29.209
MACHO M-10x1



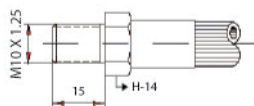
29.121
MACHO 10x1



29.160
MACHO 10x1



29.124
MACHO 10x1.25



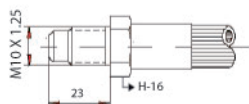
29.198
MACHO PLANO M 10 x 1.25



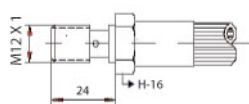
29.154
MACHO PLANO 10 x 1.25



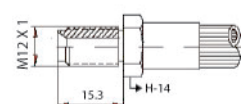
29.196
M 10x1.25



29.511
MACHO 10x1.25



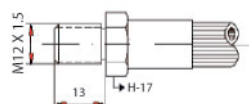
29.144
MACHO 12x1



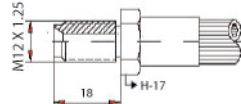
29.131
MACHO 12x1



29.183
MACHO 12x1



29.128
MACHO 12x1.5



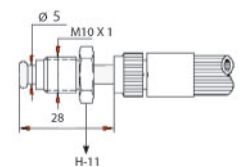
29.133
MACHO 12x1.25



29.163
MACHO 12x1.5



29.147
MACHO 12x1.5



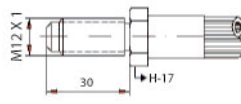
29.190
MACHO GIRATORIO M 10mm



29.501
MACHO M-12x1

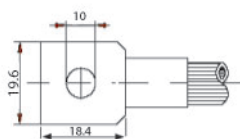


29.127
MACHO 12x1

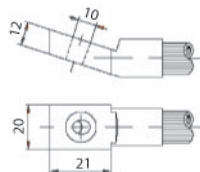


29.173
MACHO 12x1

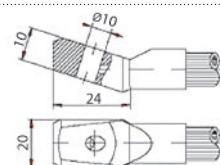
OLHAIS



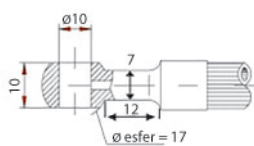
29.502
OLHAL 10mm (BLOCO)



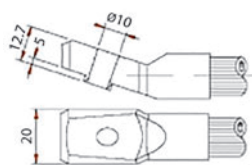
29.159
OLHAL INCLINADO 10mm



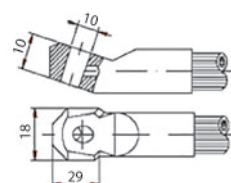
29.166
OLHAL INCLINADO 10mm



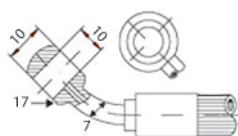
29.176
OLHAL ESFER. 10mm



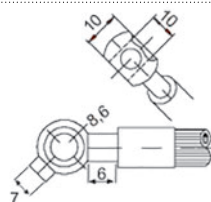
29.178
OLHAL ESFER. 10mm



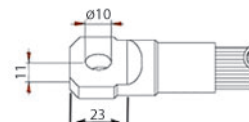
29.182
OLHAL INCLINADO 10mm



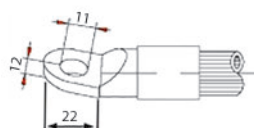
29.189
OLHAL CURVO 10mm



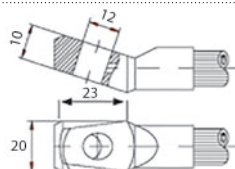
29.191
OLHAL 10mm



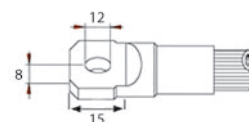
29.203
OLHAL 10mm



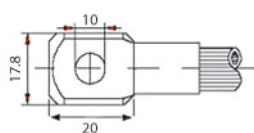
29.143
OLHAL INCLINADO 11mm



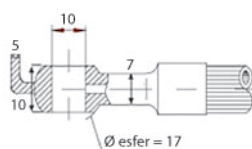
29.177
OLHAL INCLINADO 12mm



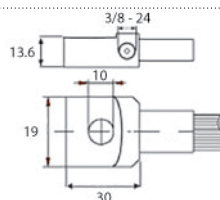
29.142
TRAVAO OLHAL 12mm



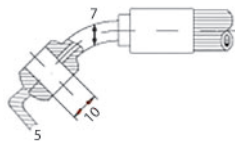
29.197
TRAVÃO OLHAL 10mm



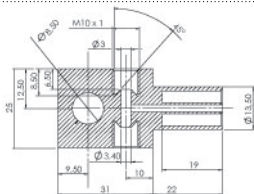
29.504
OLHAL 10mm DIREITA



29.505
TRAVÃO OLHAL 3/8 (BLOCO)



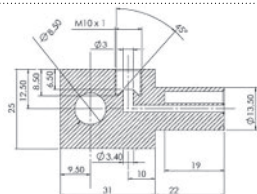
29.507
OLHAL 10mm 23º



29.518
PONTEIRA DE TRAVÃO OLHAL M10 x 1
BLOCO

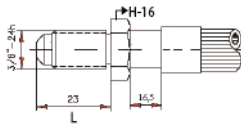


29.600
PONT. TRAVÃO
TUBULAR 10mm T-
3/16

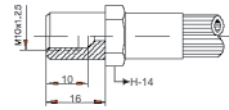


29.521
PONT. TRAVÃO OLHAL M10x1 (BLOCO-
L)

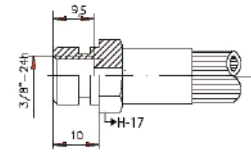
PONTEIRA FEMEA SAE



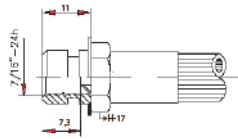
29.503
MACHO 7/16



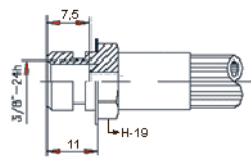
29.199
FEMEA 10x1.25



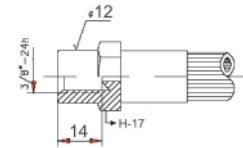
29.102
FEMEA 3/8-24



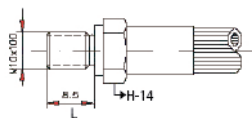
29.114
FEMEA 7/16-24



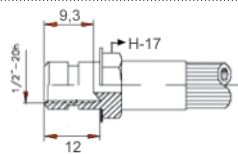
29.180
FEMEA 3/8-24



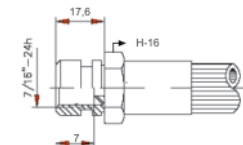
29.155
FEMEA 3/8-24



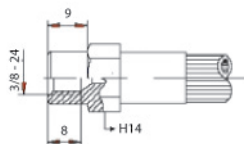
29.165
FEMEA 3/8-24



29.150
FEMEA 1/2-20

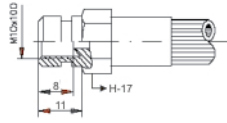


29.509
FEMEA 7/16

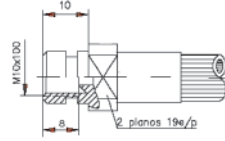


29.207
PONTEIRA DE TRAVÃO FEMEA 3/8-24

PONTEIRA FEMEA METRICA



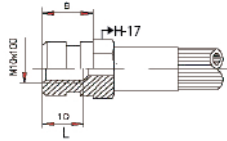
29.171
FEMEA 10x1



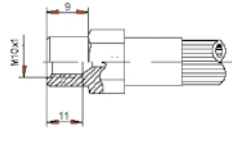
29.175
FEMEA 10x1



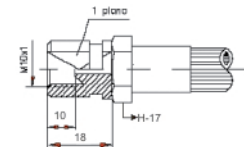
29.192
FEMEA 10x1



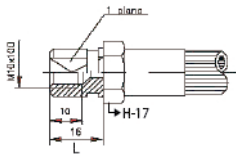
29.113
FEMEA 10x1



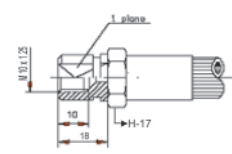
29.167
FEMEA 10x1



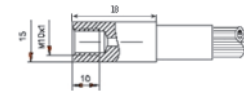
29.158
FEMEA 10x1



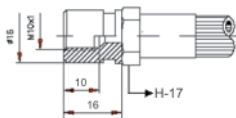
29.148
FEMEA 10x1



29.105
FEMEA 10x1.25



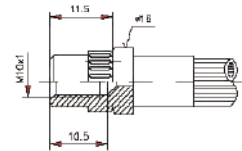
29.187
FEMEA 10x1



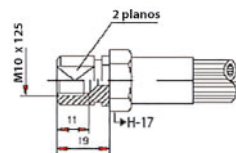
29.179
FEMEA 10x1



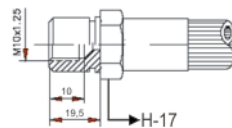
29.141
FEMEA 10x1



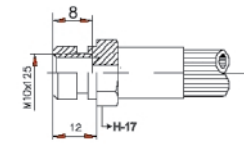
29.156
FEMEA ESTRIADA 10 x 1



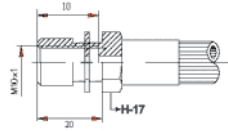
29.104
FEMEA 10x1.25



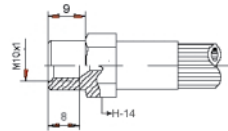
29.106
FEMEA 10x1.25



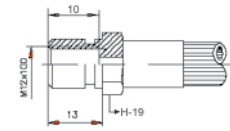
29.111
FEMEA 10x1.25



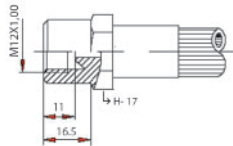
29.500
FEMEA M-10x1



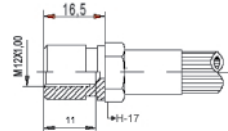
29.136
FEMEA 10x1



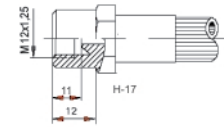
29.112
FEMEA 12x1



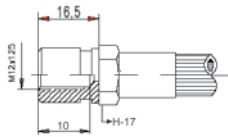
29.172
FEMEA 12x1



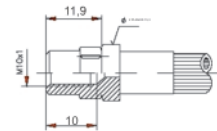
29.513
FEMEA 12x1.00



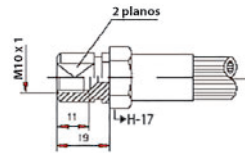
29.514
FEMEA 12x1.25



29.151
FEMEA 12x1.25

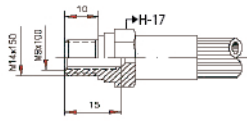


29.123
FEMEA 10x1

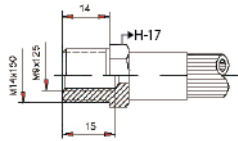


29.520
PONT. TRAVAO FEMEA 10x1

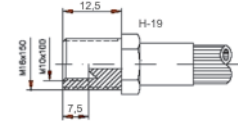
PONTEIRA MACHO / FEMEA



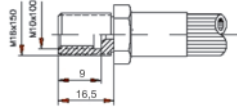
29.117
M/F M14x1.5 M9x1.0



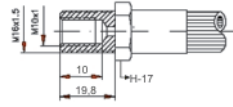
29.116
F/M 9x1.25/14x1.5



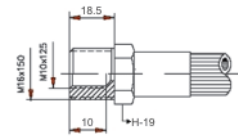
29.109
F/M 10x1/16x1.5



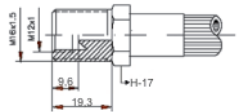
29.146
F/M 10x1/16x1.5



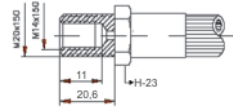
29.184
M/F 10x1 - 16x1.5



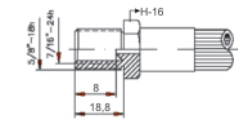
29.115
F/M 10x1.25-16



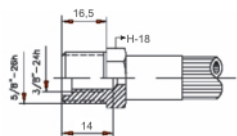
29.162
F/M 12x1-16x1.5



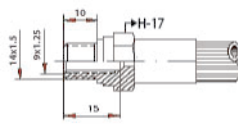
29.195
M/F 20x1.5 - 14x1.5



29.140
M/F 7/16 / 5/8

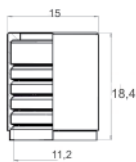


29.119
M/F 3/8-24 / 5/8-26



29.118
F/M 9x1.25 14x1.5

PONTEIRA DE TRAVÃO



29.001
CAMISA TRAVAO 1/8



29.002
PONTEIRA TRAVAO 1/8 (P/Soldar)



29.0111
CAMISA 1/8 TEFLON-LISO TRAVÃO



29.1110
PONT. BANJO MET. M10 T-1/8



29.1112
PONT. BANJO MET. 20° M10 T-1/8



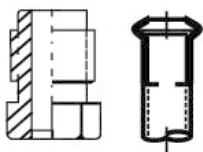
29.1113
PONT. BANJO MET. 45° M10 T-1/8



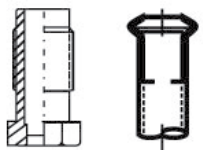
29.1114
PONT. BANJO MET. 90° M10 T-1/8

ACESSÓRIOS PARA TUBO TRAVÃO DE AÇO

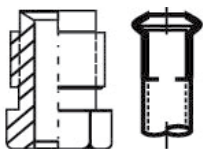
MACHO ROLANTE METRICO

MACHO M10x1 T-4.75**19.9710300**

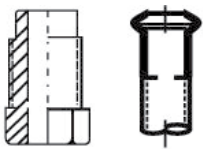
19.9710300

CÓDIGO**MACHO M10x1 T-4.75****19.9990224**

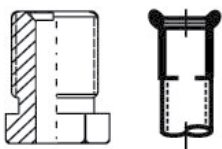
19.9990224

CÓDIGO**MACHO M10x1 T-4.75****19.9720300**

19.9720300

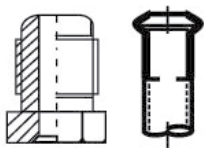
CÓDIGO**MACHO M10x1.25 T-4.75****19.9990204**

19.9990204

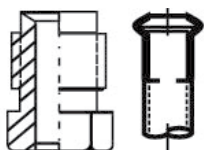
CÓDIGO**MACHO M10x1.25 T-4.75****19.9990203**

19.9990203

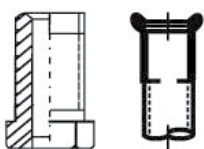
CÓDIGO

MACHO M12x1 T-4.75**19.9710403****CÓDIGO**

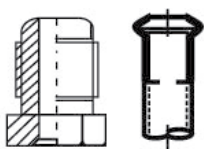
19.9710403

MACHO M12x1 T-4.75**19.9720403****CÓDIGO**

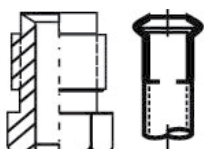
19.9720403

MACHO M12x1,25 T-4.75**19.4533003****CÓDIGO**

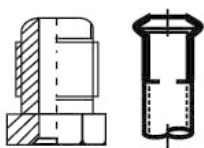
19.4533003

MACHO M12x1 T-6**19.9710400****CÓDIGO**

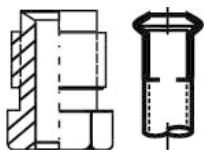
19.9710400

MACHO M12x1 T-6**19.9720400****CÓDIGO**

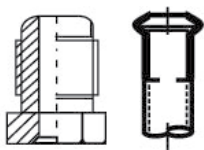
19.9720400

MACHO M14x1 T-8**19.9710651****CÓDIGO**

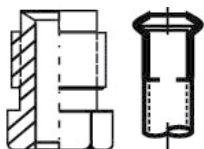
19.9710651

MACHO M14x1 T-8**19.9720651****CÓDIGO**

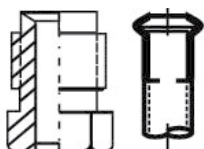
19.9720651

MACHO M14x1,5 T-8**19.9710600****CÓDIGO**

19.9710600

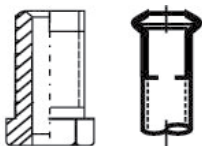
MACHO M14x1,5 T-8**19.9720600****CÓDIGO**

19.9720600

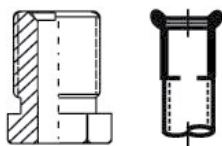
MACHO M16x1,5 T-10**19.9710800****CÓDIGO**

19.9710800

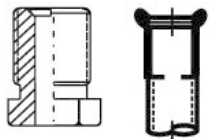
MACHO ROLANTE UNF

MACHO 3/8-24 UNF T-4.75**19.9730300**

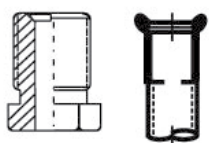
19.9730300

CÓDIGO**MACHO 3/8-24 UNF T-4.75****19.9740300**

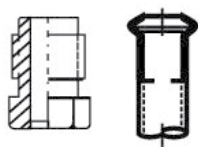
19.9740300

CÓDIGO**MACHO 1/2-20 UNF T-4.75****19.9990215**

19.9990215

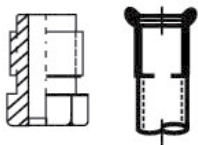
CÓDIGO**MACHO 7/16-20 UNF T-4.75****19.9990216**

19.9990216

CÓDIGO**MACHO 7/16 UNF T-4.75****19.9990218**

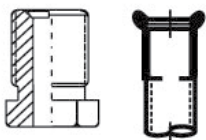
19.9990218

CÓDIGO**MACHO 1/2-20 UNF T-6****19.9990200**



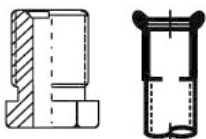
CÓDIGO
19.9990200

MACHO 7/16-24 UNF T-6 **19.9990210**



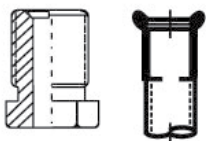
CÓDIGO
19.9990210

MACHO 7/16-20 UNF T-6 **19.9990217**



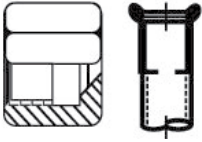
CÓDIGO
19.9990217

MACHO 5/8-18 UNF T-10 **19.9741008**

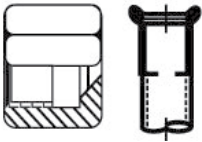


CÓDIGO
19.9741008

FEMEA ROLANTE METRICA

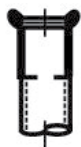
FEMEA M10x1 T-4.75**19.9330300****CÓDIGO**

19.9330300

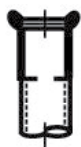
FEMEA M16x1,5 T-9**19.9330809****CÓDIGO**

19.9330809

FEMEA ROLANTE UNF

FEMEA 7/16-20 UNF T-6**19.9990425**

19.9990425

CÓDIGO**FEMEA 3/8-24 UNF T-4.75****19.9990404**

19.9990404

CÓDIGO**FEMEA 3/8-24 UNF T-4.75****19.9990443**

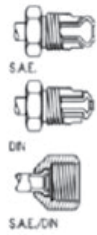
19.9990443

CÓDIGO

MAQUINA P/TUBO TRAVAO METALICO

MAQUINA P/TUBO TRAVAO METALICO 4.75/6mm

HT-104



CÓDIGO

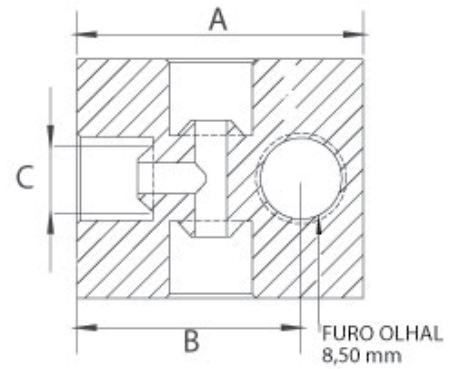
HT-104

DADOS TECNICOS

DERIVADOR T

DERIVADOR T CONE MACHO

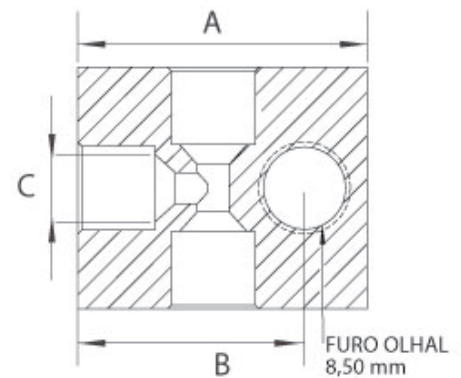
29.T



100802	ROSCA		
CÓDIGO	C	A	B
29.T02	3/8 - 24	30	23.5
29.T05	M10 x 1.0	30	23.5

DERIVADOR T CONE FEMEA

29.T



100802	ROSCA		
CÓDIGO	C	A	B
29.T03	3/8 - 24	30	23.5
29.T04	M10 x 1.0	30	23.5

TUBOS DE TRAVÃO

TUBO TRAVAO SAE-J-1401

TB



CÓDIGO	in
TB204	1/8
TB205	3/16

TUBO TRAVÃO AR SAE J1402

TB.412

DESCRIÇÃO TÉCNICA:

Tubo interior em NBR reforçado com duas telas textéis cobertas com borracha preta sintética CR.

-40 °C a +100 °C



100952						
CÓDIGO	in	mm	mm	PRESSÃO DE TRABALHO BAR	PRESSÃO RUTURA BAR	RAIO CURVATURA
TB.412.10	3/8"	9.5	19	30	120	89
TB.412.13	1/2"	12.7	22.2	30	120	102
TB.412.16	5/8"	15.8	27	30	120	114

TUBO TRAVÃO AÇO

TB

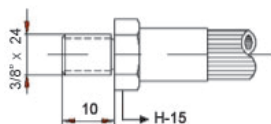


100950	
CÓDIGO	mm
TB108	4.75
TB109	6.00

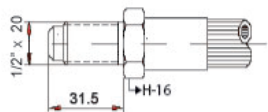
PONTEIRA MACHO SAE

MACHO PLANO 3/8-24**29.107****CÓDIGO**

29.107

**MACHO 1/2-20****29.452****CÓDIGO**

29.452

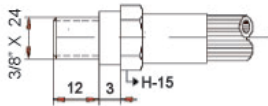
**MACHO 3/8-24****29.101****CÓDIGO**

29.101

**MACHO 3/8-24****29.139**

CÓDIGO

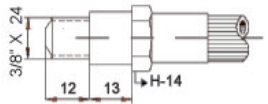
29.139

**MACHO 3/8-24****29.157****CÓDIGO**

29.157

**MACHO 3/8-24****29.138****CÓDIGO**

29.138

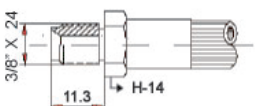
**MACHO 3/8-24****29.130****CÓDIGO**

29.130

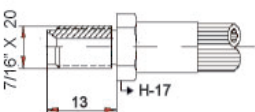
**MACHO PLANO 1/2-20****29.135**

**CÓDIGO**

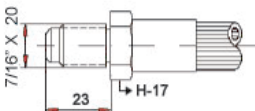
29.135

MACHO 3/8-24**29.129****CÓDIGO**

29.129

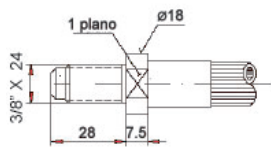
MACHO 7/16-20**29.134****CÓDIGO**

29.134

MACHO 7/16-20**29.149****CÓDIGO**

29.149

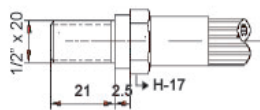
MACHO 3/8-24**29.125**

**CÓDIGO**

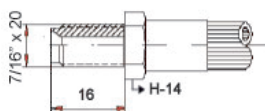
29.125

MACHO 1/2**29.506****CÓDIGO**

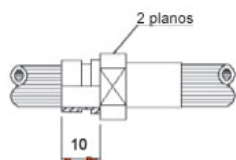
29.506

**MACHO 7/16****29.510****CÓDIGO**

29.510

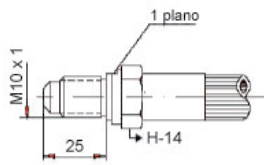
**PONT. TRAVÃO ABRAÇADEIRA****29.508****CÓDIGO**

29.508

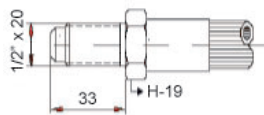
**TUBULAR 8mm****29.110****CÓDIGO**

29.110



MACHO 10x1**29.120**

29.120

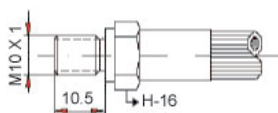
CÓDIGO**PONT.TRAVÃO MACHO 1/2 T-3/16****29.601****CÓDIGO**

29.601

PONTEIRA MACHO MÉTRICA

MACHO PLANO 10x1**29.145****CÓDIGO**

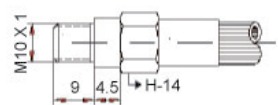
29.145

**MACHO 10x1****29.193****CÓDIGO**

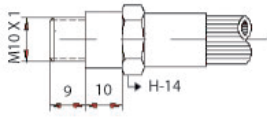
29.193

**MACHO 10x1****29.185****CÓDIGO**

29.185

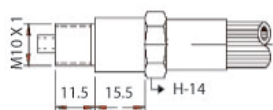
**MACHO 10x1****29.137**

29.137



MACHO 10x1**29.512****CÓDIGO**

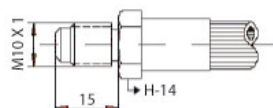
29.512

**MACHO 10x1 L-25****29.170****CÓDIGO**

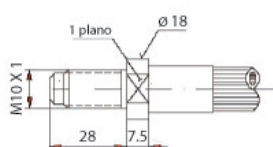
29.170

**MACHO 10x1****29.168****CÓDIGO**

29.168

**MACHO 10x1****29.161****CÓDIGO**

29.161



MACHO M10x1 LONGO**29.205****CÓDIGO**

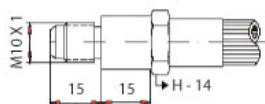
29.205

**M10x1 CONE-SAE****29.206****CÓDIGO**

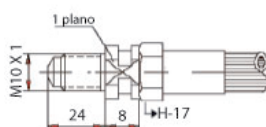
29.206

**MACHO 10x1****29.152****CÓDIGO**

29.152

**MACHO M-10x1****29.209****CÓDIGO**

29.209

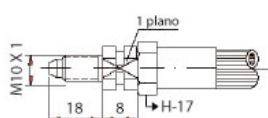


MACHO 10x1**29.121****CÓDIGO**

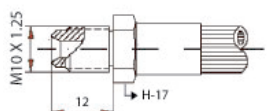
29.121

**MACHO 10x1****29.160****CÓDIGO**

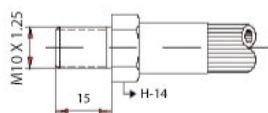
29.160

**MACHO 10x1.25****29.124****CÓDIGO**

29.124

**MACHO PLANO M 10 x 1.25****29.198****CÓDIGO**

29.198

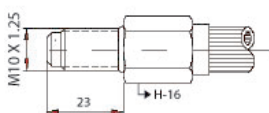


MACHO PLANO 10 x 1.25**29.154****CÓDIGO**

29.154

**M 10x1.25****29.196****CÓDIGO**

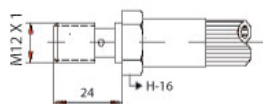
29.196

**MACHO 10x1.25****29.511****CÓDIGO**

29.511

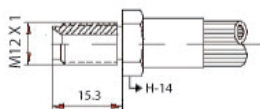
**MACHO 12x1****29.144****CÓDIGO**

29.144



MACHO 12x1**29.131****CÓDIGO**

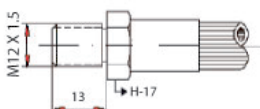
29.131

**MACHO 12x1****29.183****CÓDIGO**

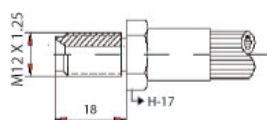
29.183

**MACHO 12x1.5****29.128****CÓDIGO**

29.128

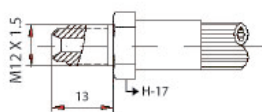
**MACHO 12x1.25****29.133****CÓDIGO**

29.133



MACHO 12x1.25**29.163****CÓDIGO**

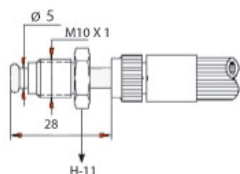
29.163

**MACHO 12x1.5****29.147****CÓDIGO**

29.147

**MACHO GIRATORIO M 10mm****29.190****CÓDIGO**

29.190

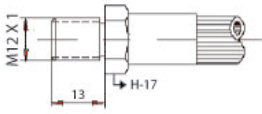
**MACHO M-12x1****29.501****CÓDIGO**

29.501

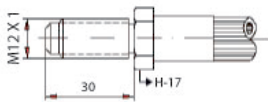


MACHO 12x1**29.127****CÓDIGO**

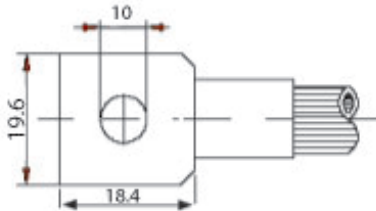
29.127

**MACHO 12x1****29.173****CÓDIGO**

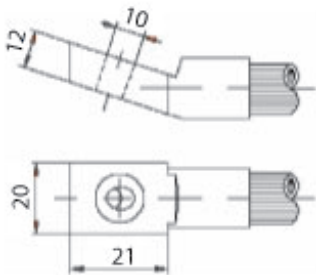
29.173



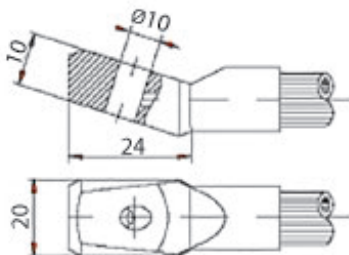
OLHAIS

OLHAL 10mm (BLOCO)**29.502**

29.502

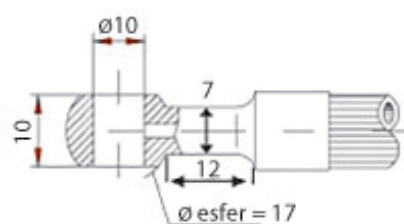
CÓDIGO**OLHAL INCLINADO 10mm****29.159**

29.159

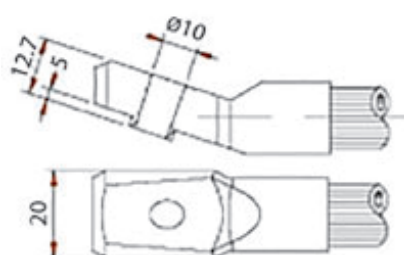
CÓDIGO**OLHAL INCLINADO 10mm****29.166**

29.166

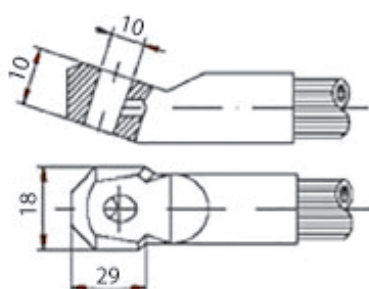
CÓDIGO

OLHAL ESFER. 10mm**29.176**

29.176

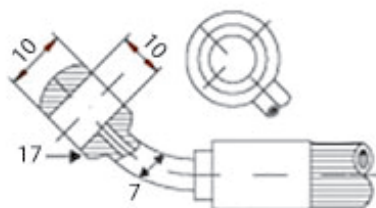
CÓDIGO**OLHAL ESFER. 10mm****29.178**

29.178

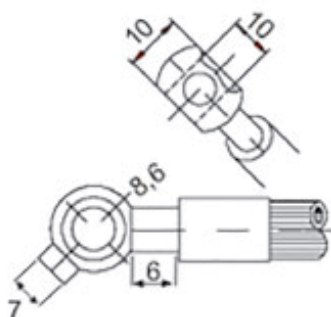
CÓDIGO**OLHAL INCLINADO 10mm****29.182**

29.182

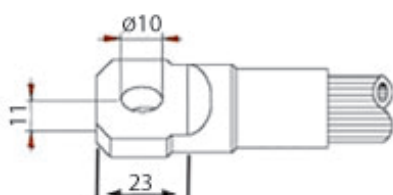
CÓDIGO

OLHAL CURVO 10mm**29.189**

29.189

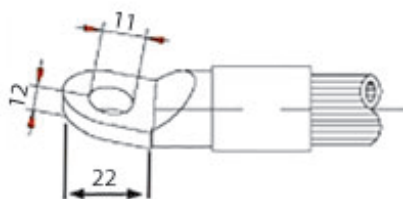
CÓDIGO**OLHAL 10mm****29.191**

29.191

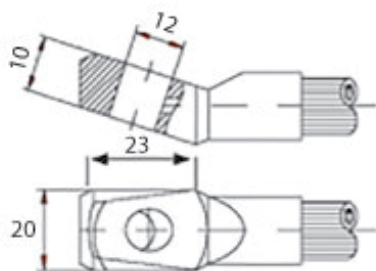
CÓDIGO**OLHAL 10mm****29.203**

29.203

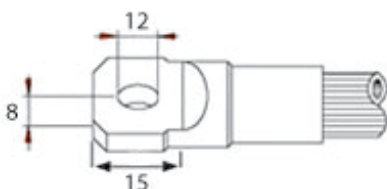
CÓDIGO

OLHAL INCLINADO 11mm**29.143**

29.143

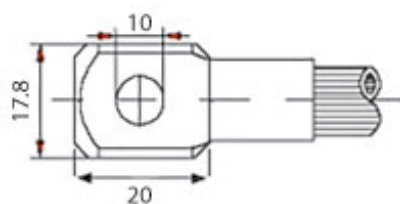
CÓDIGO**OLHAL INCLINADO 12mm****29.177**

29.177

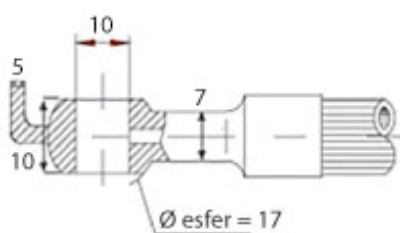
CÓDIGO**TRAVAO OLHAL 12mm****29.142**

29.142

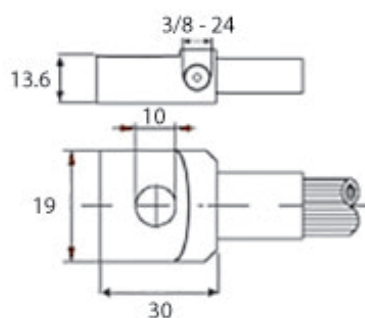
CÓDIGO

TRAVÃO OLHAL 10mm**29.197**

29.197

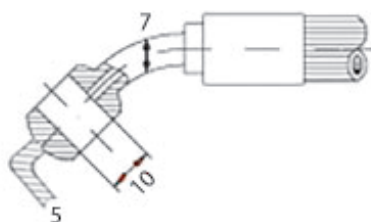
CÓDIGO**OLHAL 10mm DIREITA****29.504**

29.504

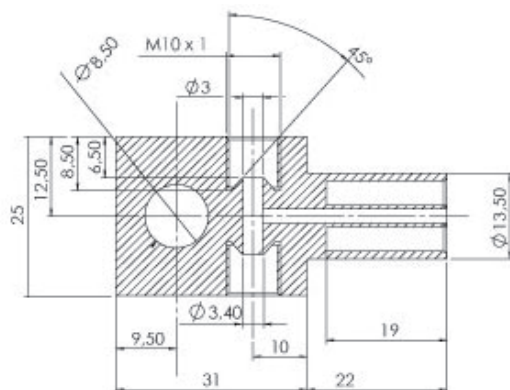
CÓDIGO**TRAVÃO OLHAL 3/8 (BLOCO)****29.505**

29.505

CÓDIGO

OLHAL 10mm 23º**29.507**

29.507

CÓDIGO**PONTEIRA DE TRAVÃO OLHAL M10 x 1 BLOCO****29.518**

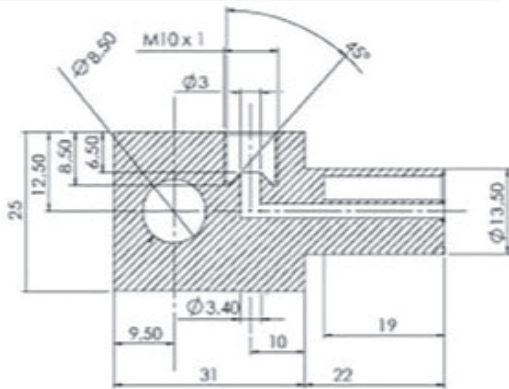
29.518

CÓDIGO**PONT. TRAVÃO TUBULAR 10mm T-3/16****29.600****CÓDIGO**

29.600

CÓDIGO

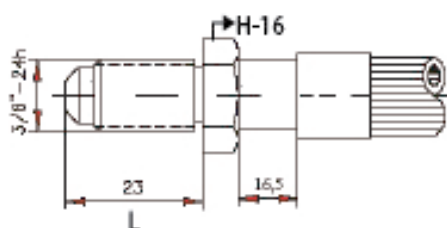
29.521



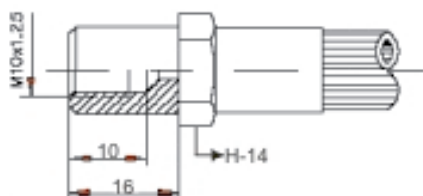
PONTEIRA FEMEA SAE

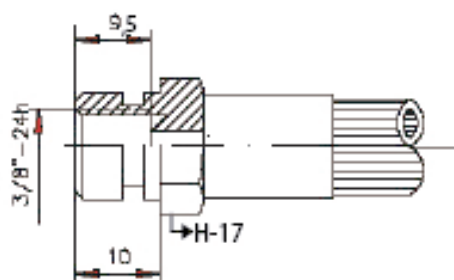
MACHO 7/16**29.503****CÓDIGO**

29.503

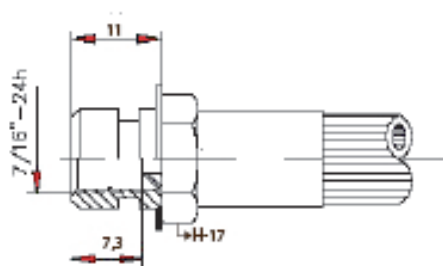
**FEMEA 10x1.25****29.199****CÓDIGO**

29.199

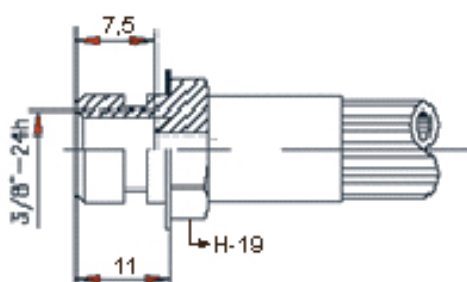
**FEMEA 3/8-24****29.102**

**CÓDIGO**

29.102

FEMEA 7/16-24 **29.114****CÓDIGO**

29.114

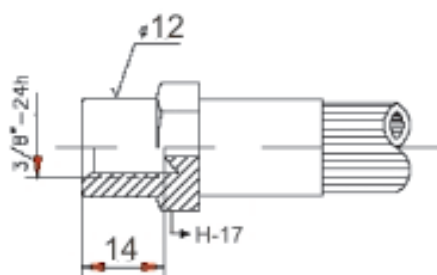
FEMEA 3/8-24 **29.180****CÓDIGO**

29.180

FEMEA 3/8-24 **29.155**

CÓDIGO

29.155

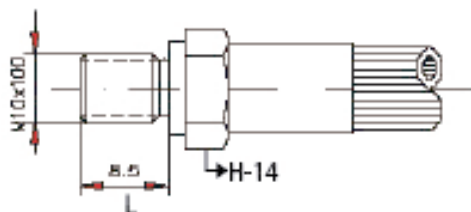


FEMEA 3/8-24

29.165

CÓDIGO

29.165

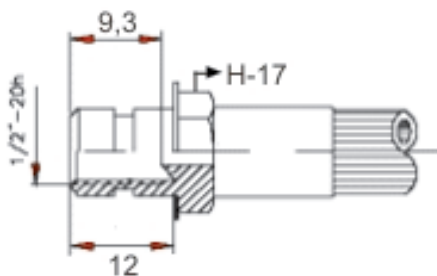


FEMEA 1/2-20

29.150

CÓDIGO

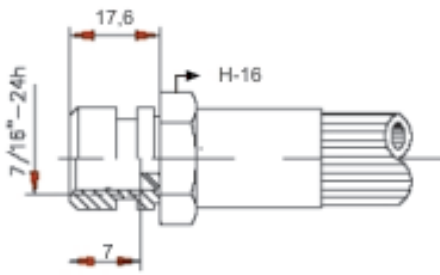
29.150



FEMEA 7/16

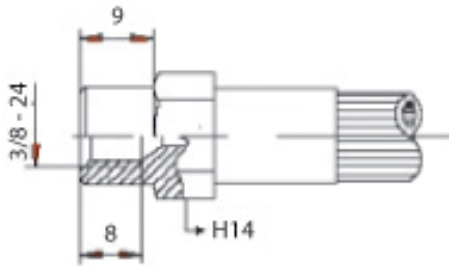
29.509

29.509



CÓDIGO

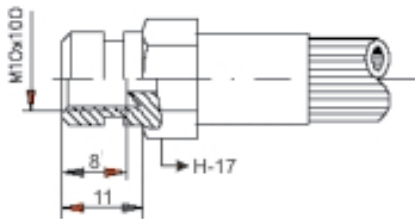
29.207



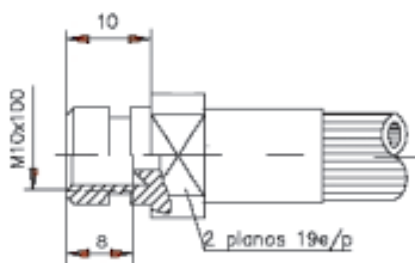
PONTEIRA FEMEA METRICA

FEMEA 10x1**29.171****CÓDIGO**

29.171

**FEMEA 10x1****29.175****CÓDIGO**

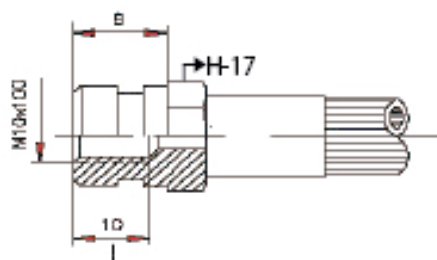
29.175

**FEMEA 10x1****29.192****CÓDIGO**

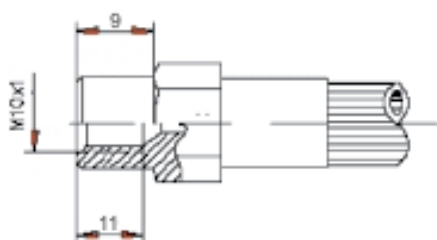
29.192

FEMEA 10x1**29.113****CÓDIGO**

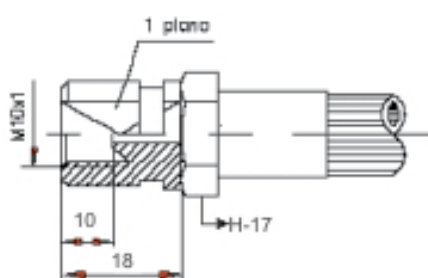
29.113

**FEMEA 10x1****29.167****CÓDIGO**

29.167

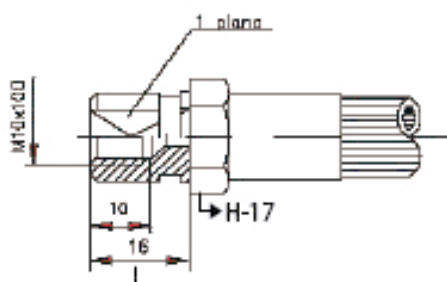
**FEMEA 10x1****29.158****CÓDIGO**

29.158

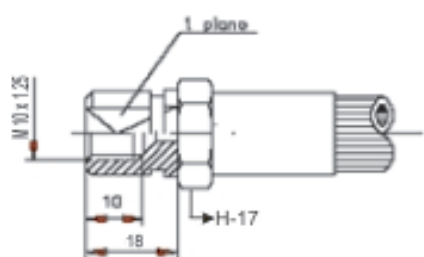


FEMEA 10x1**29.148****CÓDIGO**

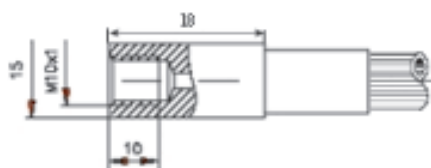
29.148

**FEMEA 10x1.25****29.105****CÓDIGO**

29.105

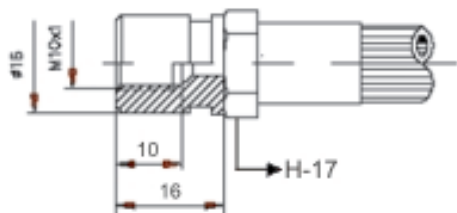
**FEMEA 10x1****29.187****CÓDIGO**

29.187



FEMEA 10x1**29.179****CÓDIGO**

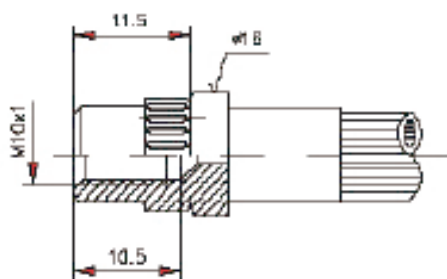
29.179

**FEMEA 10x1****29.141****CÓDIGO**

29.141

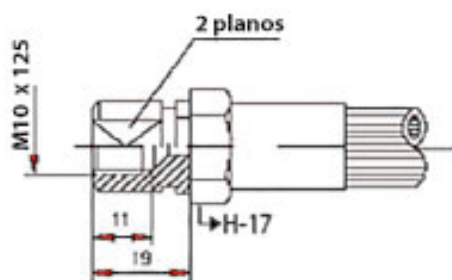
FEMEA ESTRIADA 10 x 1**29.156****CÓDIGO**

29.156



FEMEA 10x1.25

29.104

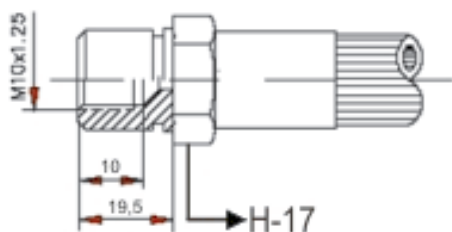


29.104

CÓDIGO

FEMEA 10x1.25

29.106

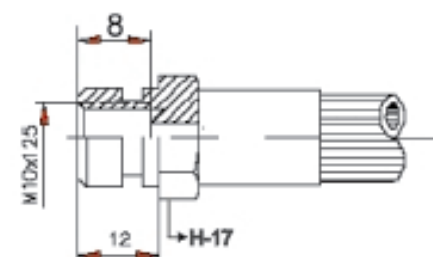


29.106

CÓDIGO

FEMEA 10x1.25

29.111

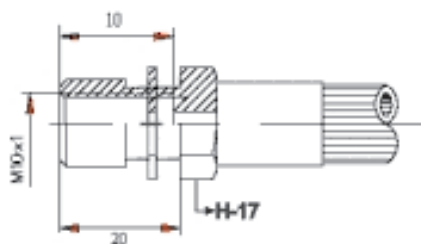


29.111

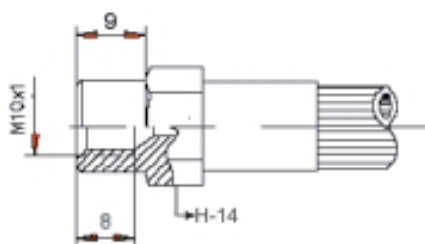
CÓDIGO

FEMEA M-10x1**29.500****CÓDIGO**

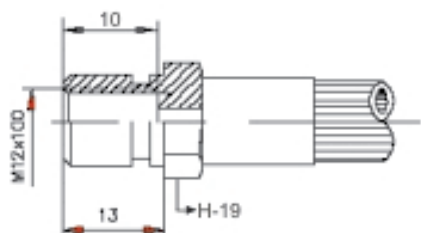
29.500

**FEMEA 10x1****29.136****CÓDIGO**

29.136

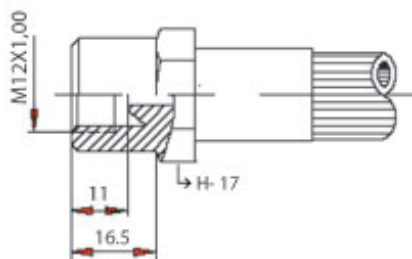
**FEMEA 12x1****29.112****CÓDIGO**

29.112

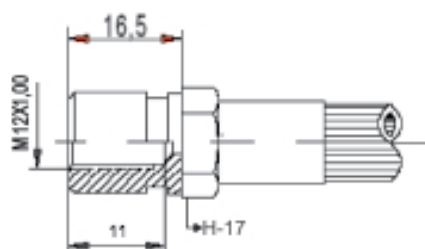


FEMEA 12x1**29.172****CÓDIGO**

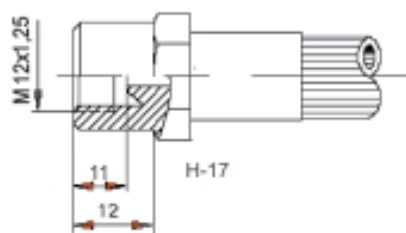
29.172

**FEMEA 12x1.00****29.513****CÓDIGO**

29.513

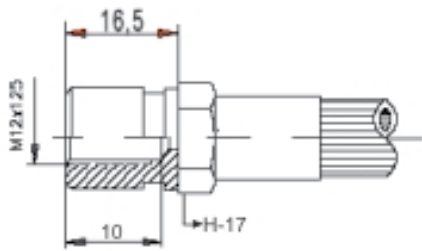
**FEMEA 12x1.25****29.514****CÓDIGO**

29.514



FEMEA 12x1.25

29.151

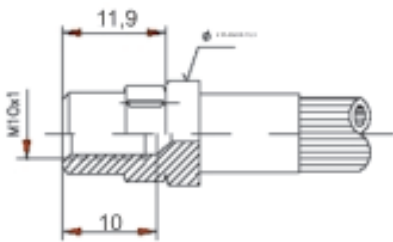


29.151

CÓDIGO

FEMEA 10x1

29.123

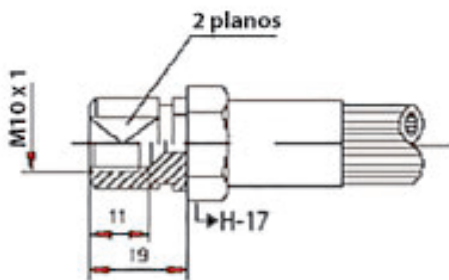


29.123

CÓDIGO

PONT. TRAVAO FEMEA 10x1

29.520



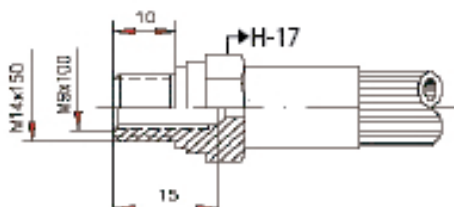
29.520

CÓDIGO

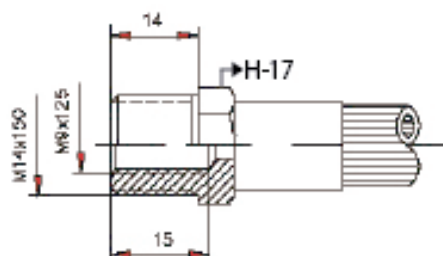
PONTEIRA MACHO / FEMEA

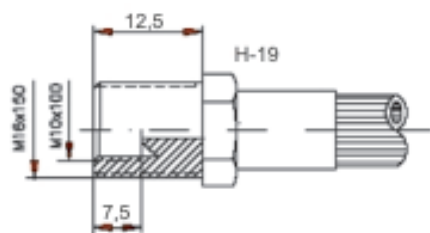
M/F M14x1.5 M9x1.0**29.117****CÓDIGO**

29.117

**F/M 9x1.25/14x.15****29.116****CÓDIGO**

29.116

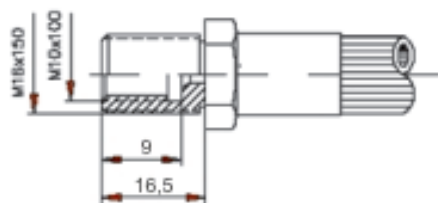
**F/M 10x1/16x1.5****29.109**

**CÓDIGO**

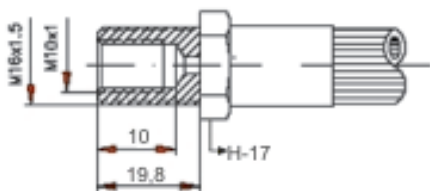
29.109

F/M 10x1/16x1.5 **29.146****CÓDIGO**

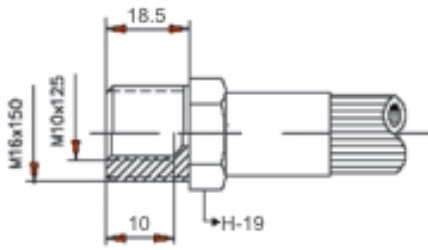
29.146

**M/F 10x1 - 16x1.5** **29.184****CÓDIGO**

29.184

**F/M 10x1.25-16** **29.115**

29.115

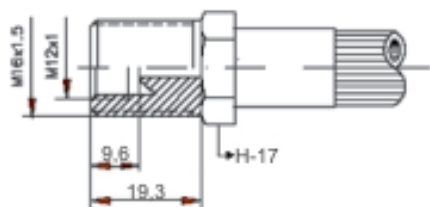


F/M 12x1-16x1.5

29.162

CÓDIGO

29.162

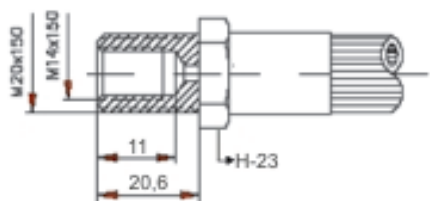


M/F 20x1.5 - 14x1.5

29.195

CÓDIGO

29.195

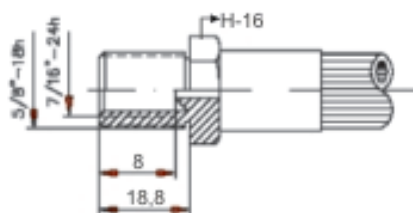


M/F 7/16 / 5/8

29.140

CÓDIGO

29.140

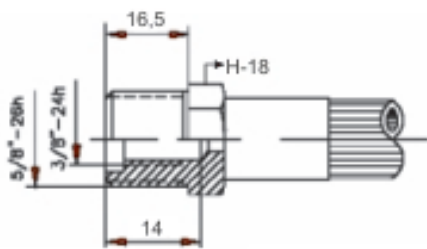


M/F 3/8-24 / 5/8-26

29.119

CÓDIGO

29.119

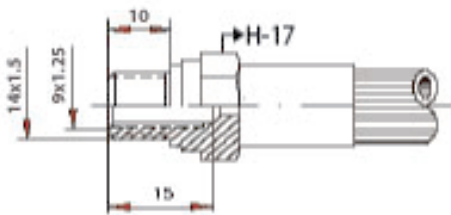


F/M 9x1.25 14x1.5

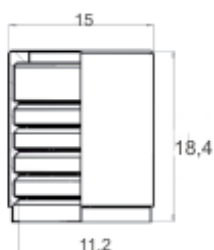
29.118

CÓDIGO

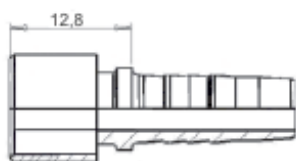
29.118



PONTEIRA DE TRAVÃO

CAMISA TRAVAO 1/8**29.001**

29.001

CÓDIGO**PONTEIRA TRAVAO 1/8 (P/Soldar)****29.002**

29.002

CÓDIGO**CAMISA 1/8 TEFLON-LISO TRAVÃO****29.0111**

29.0111.01

CÓDIGO

PONT. BANJO MET. M10 T-1/8**29.1110**

29.1110.0110

CÓDIGO**PONT. BANJO MET. 20° M10 T-1/8****29.1112**

29.1112.0110

CÓDIGO**PONT. BANJO MET. 45° M10 T-1/8****29.1113**

29.1113.0110

CÓDIGO**PONT. BANJO MET. 90° M10 T-1/8****29.1114**

29.1114.0110

CÓDIGO

ÍNDICE

C	
CAMISA 1/8 TEFLON-LISO TRAVÃO	72
CAMISA TRAVAO 1/8	72
D	
DERIVADOR T CONE FEMEA	29
DERIVADOR T CONE MACHO	29
F	
F/M 9x1.25 14x1.5	71
F/M 9x1.25/14x.15	67
F/M 10x1.25-16	68
F/M 10x1/16x1.5	67, 68
F/M 12x1-16x1.5	70
FEMEA 1/2-20	56
FEMEA 3/8-24	54-56
FEMEA 3/8-24 UNF T-4.75	27
FEMEA 7/16	56
FEMEA 7/16-20 UNF T-6	27
FEMEA 7/16-24	55
FEMEA 10x1	64, 66
FEMEA 10x1.25	54, 61, 63
FEMEA 12x1	64, 65
FEMEA 12x1.00	65
FEMEA 12x1.25	65, 66
FEMEA ESTRIADA 10 x 1	62
FEMEA M-10x1	64
FEMEA M10x1 T-4.75	26
FEMEA M16x1,5 T-9	26
M	
M/F 3/8-24 / 5/8-26	71
M/F 7/16 / 5/8	70
M/F 10x1 - 16x1.5	68
M/F 20x1.5 - 14x1.5	70
M/F M14x1.5 M9x1.0	67
M10x1 CONE-SAE	41
M 10x1.25	43
MACHO 1/2	36
MACHO 1/2-20	32
MACHO 1/2-20 UNF T-4.75	24
MACHO 1/2-20 UNF T-6	24
MACHO 3/8-24	32-34
MACHO 3/8-24 UNF T-4.75	24
MACHO 5/8-18 UNF T-10	25
MACHO 7/16	36, 54
MACHO 7/16 UNF T-4.75	24
MACHO 7/16-20	34
MACHO 7/16-20 UNF T-4.75	24
MACHO 7/16-20 UNF T-6	25
MACHO 7/16-24 UNF T-6	25
MACHO 10x1	37, 38, 40-42
MACHO 10x1 L-25	40
MACHO 10x1.25	42, 43
MACHO 12x1	43, 44, 46
MACHO 12x1.5	44, 45
MACHO 12x1.25	44, 45
MACHO GIRATORIO M 10mm	45
MACHO M-10x1	41
MACHO M-12x1	45
MACHO M10x1 LONGO	41
MACHO M10x1 T-4.75	21
MACHO M10x1.25 T-4.75	21
MACHO M12x1 T-4.75	22
MACHO M12x1 T-6	22
MACHO M12x1,25 T-4.75	22
MACHO M14x1 T-8	22, 23
MACHO M14x1,5 T-8	23
MACHO M16x1,5 T-10	23
MACHO PLANO 1/2-20	33
MACHO PLANO 3/8-24	32
MACHO PLANO 10 x 1.25	43
MACHO PLANO 10x1	38
MACHO PLANO M 10 x 1.25	42
MAQUINA P/TUBO TRAVAO METALICO 4.75/6mm	28
O	
OLHAL 10mm	49
OLHAL 10mm (BLOCO)	47
OLHAL 10mm 23º	52
OLHAL 10mm DIREITA	51
OLHAL CURVO 10mm	49
OLHAL ESFER. 10mm	48
OLHAL INCLINADO 10mm	47, 48
OLHAL INCLINADO 11mm	50
OLHAL INCLINADO 12mm	50
P	
PONT. BANJO MET. 20º M10 T-1/8	73
PONT. BANJO MET. 45º M10 T-1/8	73
PONT. BANJO MET. 90º M10 T-1/8	73
PONT. BANJO MET. M10 T-1/8	73
PONT. TRAVAO FEMEA 10x1	66
PONT. TRAVÃO ABRAÇADEIRA	36
PONT. TRAVÃO MACHO 1/2 T-3/16	37
PONT. TRAVÃO TUBOLAR 10mm T-3/16	52
PONT. TRAVÃO OLHAL M10x1 (BLOCO-L)	53
PONTEIRA DE TRAVÃO FEMEA 3/8-24	58
PONTEIRA DE TRAVÃO OLHAL M10 x 1 BLOCO	52
PONTEIRA TRAVAO 1/8 (P/Soldar)	72
T	
TRAVAO OLHAL 12mm	50
TRAVÃO OLHAL 3/8 (BLOCO)	51
TRAVÃO OLHAL 10mm	51
TUBO TRAVAO SAE-J-1401	30
TUBO TRAVÃO AÇO	30
TUBO TRAVÃO AR SAE J1402	30
TUBULAR 8mm	36